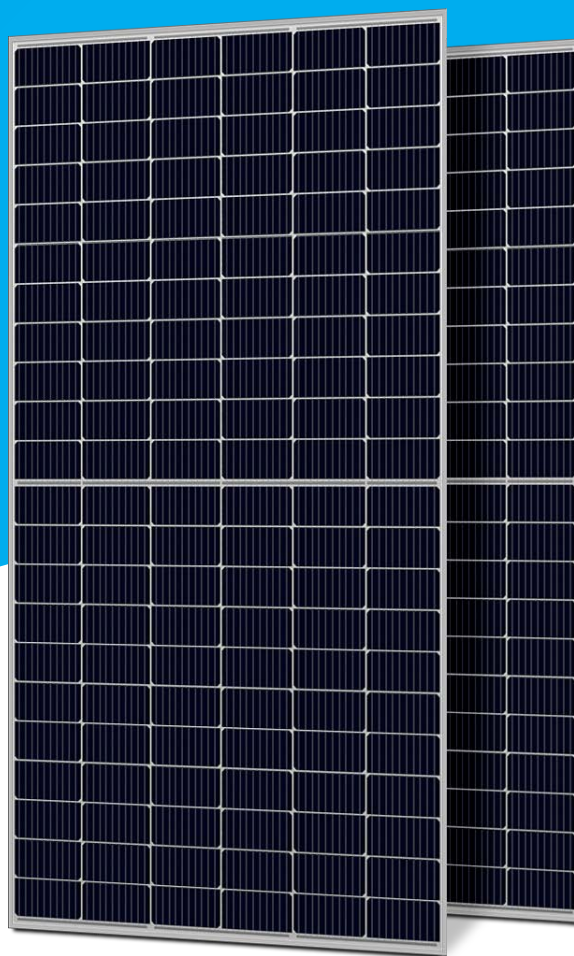


# MH66-B8(182)

## 490-505 Watt

HALF-CELL MBB MONO PERC



### Key Features



#### Multi Busbar Solar Cell

Stronger current collection ability, Special circuit design with much lower hot spot temperature;



#### PID Resistant

Excellent PID resistance at 96 hours (85°C/85%) test, and also can be improved to meet higher standards for the particularly harsh environment;



#### Anti-Crack

Excellent anti-microcracking performance with more balanced interior stress;



#### Module efficiency up to 21.29%

Half cell structure brings low resistance characteristic, higher lifetime generating capacity, simultaneously lower annual power attenuation;



#### Low-Light Performance

Excellent power generation performance under Low-Light condition due to multi busbar; better shading response benefit from half cell module;

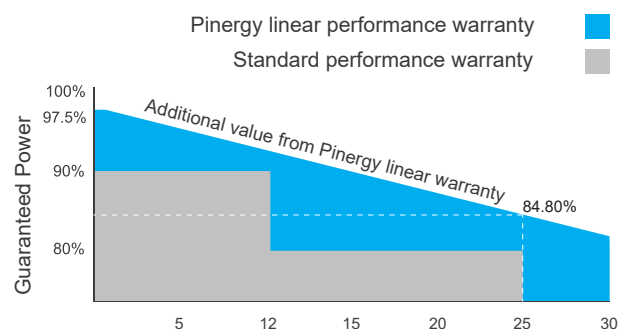


#### Strength and Durability

Certified for 5400Pa snow and 2400Pa Wind loads test;

### Linear Performance Warranty

12 Years Product Warranty · 30 Years Linear Power Warranty



### Certifications

- IEC 61215, IEC 61730, CE, CQC
- ISO9001: 2015: Quality management system
- ISO14001: 2015: Environmental management system
- ISO45001: 2018: Occupational health and safety management system



## Electrical Specifications

Module Type: PNGMH66-B8-xxx , (xxx=Pmax)

Module Type	490		495		500		505	
	STC	NOCT	STC	NOCT	STC	NOCT	STC	NOCT
Max. Power (Pmax/W)	490	368	495	372	500	376	505	380
Voltage at Max. Power (Vmp/V)	38.9	34.7	39.0	34.8	39.2	35.0	39.4	35.2
Current at Max. Power (Imp/A)	12.61	10.61	12.68	10.68	12.75	10.74	12.82	10.81
Open circuit voltage (Voc/V)	47.0	41.7	47.2	41.9	47.3	42.1	47.5	42.2
Short circuit current (Isc/A)	13.32	11.24	13.39	11.30	13.48	11.37	13.55	11.44
Module efficiency (%)	20.65%		20.86%		21.07%		21.29%	
Power Tolerance (W)	0~+5							

Standard Test Condition (STC): Irradiance 1000W/m<sup>2</sup>, Cell Temperature 25°C, AM1.5

Nominal Module Operating Temperature (NOCT): Irradiance 800W/m<sup>2</sup>, Ambient Temperature 20°C, AM1.5, Wind Speed 1m/s

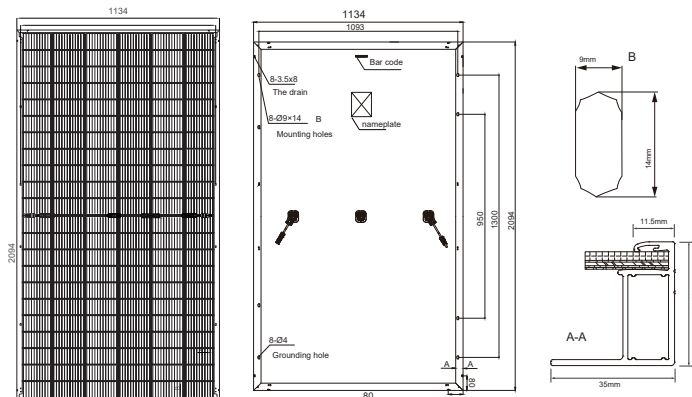
## Mechanical Specifications

Cell Type	MONO 182×91mm
No. of Cells	132 (6×22)
Dimension	2094x1134x35mm
Weight	25kg
Glass	3.2mm, Low Iron Tempered Glass
Frame	Anodized Aluminium Alloy
Junction Box	IP68, 3 diodes
Output Cables	4mm <sup>2</sup> , Length 300mm or customized
Connector type	MC4 compatible

## Packaging Configurations

Per Pallet	31 pcs
Per 40' HQ Container	682 pcs

## Engineering Drawings



## Temperature Characteristics

NOCT Temperature	44°C ±2°C
Temperature Coefficient (Pmax)	-0.36%/°C
Temperature Coefficient (Voc)	-0.28%/°C
Temperature Coefficient (Isc)	0.05%/°C

## Maximum Ratings

Maximum system voltage (IEC)	1500V DC (IEC)
Snow / Wind	5400Pa / 2400Pa
Operating Temperature	-40°C ~ +85°C
Maximum series fuse rating	25A

## Curve & Temperature Dependence

